

Selon le site officiel de Google, Google Maps va montrer l'intérieur des lieux : qu'il s'agisse d'aéroports (comme Atlanta, Chicago, San Francisco ou Tokyo Narita), de centres commerciaux, ou de grands magasins comme Ikea, Macy's, Bloomingdale.

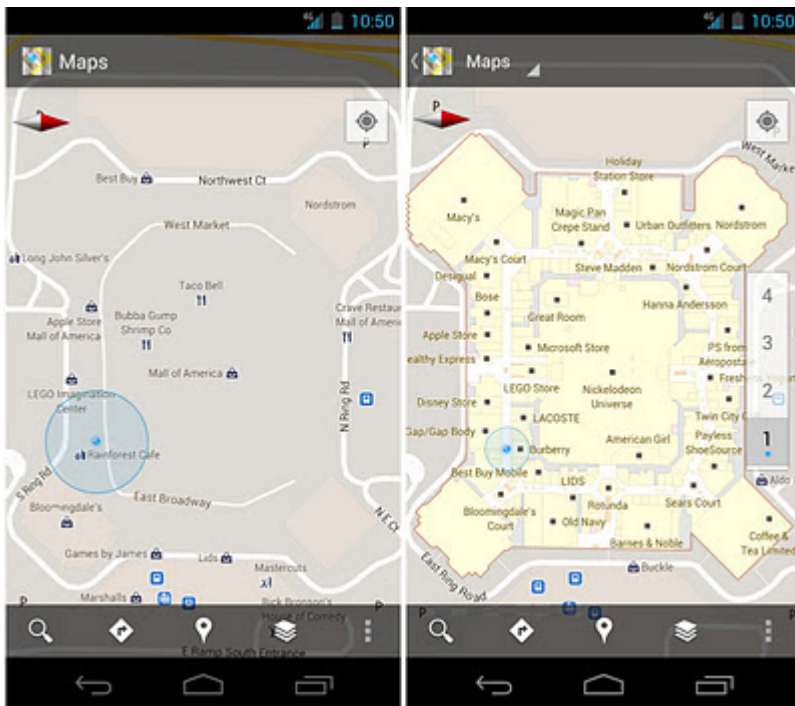
## A new frontier for Google Maps: mapping the indoors

11/29/2011 09:34:00 AM

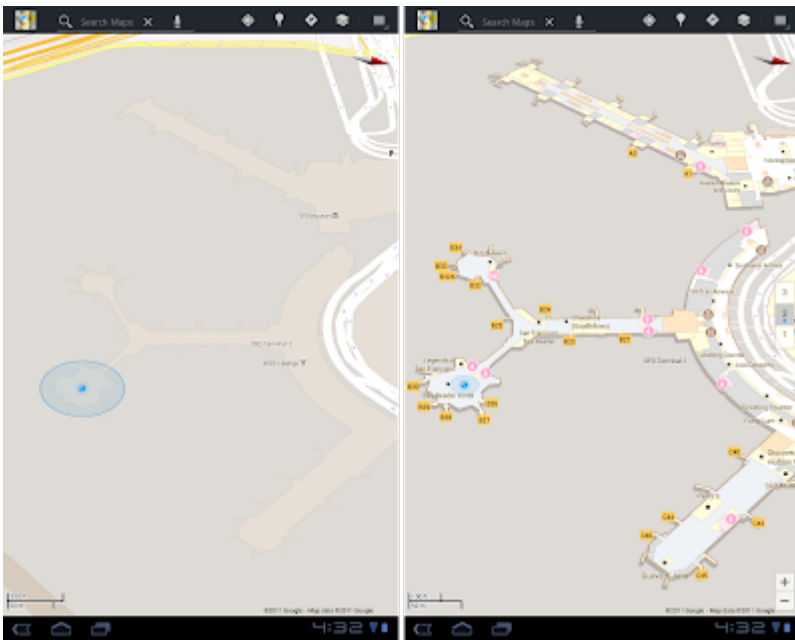
"Where am I?" and "What's around me?" are two questions that cartographers, and Google Maps, strive to answer. With Google Maps' "My Location" feature, which shows your location as a blue dot, you can see where you are on the map to avoid walking the wrong direction on city streets, or to get your bearings if you're hiking an unfamiliar trail. Google Maps also displays additional details, such as places, landmarks and geographical features, to give you context about what's nearby. And now, Google Maps for Android enables you to figure out where you are and see where you might want to go when you're indoors.

When you're inside an airport, shopping mall or retail store, a common way to figure out where you are is to look for a freestanding map directory or ask an employee for help. Starting today, with the release of Google Maps 6.0 for Android, that directory is brought to the palm of your hands, helping you determine where you are, what floor you're on, and where to go indoors.

Detailed floor plans automatically appear when you're viewing the map and zoomed in on a building where indoor map data is available. The familiar "blue dot" icon indicates your location within several meters, and when you move up or down a level in a building with multiple floors, the interface will automatically update to display which floor you're on. All this is achieved by using an approach similar to that of 'My Location' for outdoor spaces, but fine tuned for indoors.



Mall of America in Minneapolis before and after, with a floor selector



San Francisco International Airport before and after, with 3D tilt

We've initially partnered with some of the largest retailers, airports and transit stations in the U.S. and Japan, including:

- Mall of America, IKEA, The Home Depot, select Macy's and Bloomingdale's, Daimaru, Takashimaya and Mitsukoshi locations and more. Watch an IKEA demo here.
- Hartsfield-Jackson Atlanta International Airport (ATL), Chicago O'Hare (ORD), San Francisco International Airport (SFO) and Narita International (NRT), among others.
- JR and Tokyu Corporation

For a detailed list of participating locations, please visit our help center. And this is just the start—we'll continually add new indoor maps to public buildings across the world. If you're a business owner interested in getting your location's floor plan included in Google Maps, [visitmaps.Google.com/floorplans](https://www.google.com/maps/about/floorplans/).

We're thrilled Google Maps continues to provide you with new and helpful perspectives—whether you're rushing through the airport or finding your way around a mall. To visit our website and learn more about indoor Google Maps and other features, start here.

Posted by Brian McClendon, VP of Engineering, Google Earth and Maps